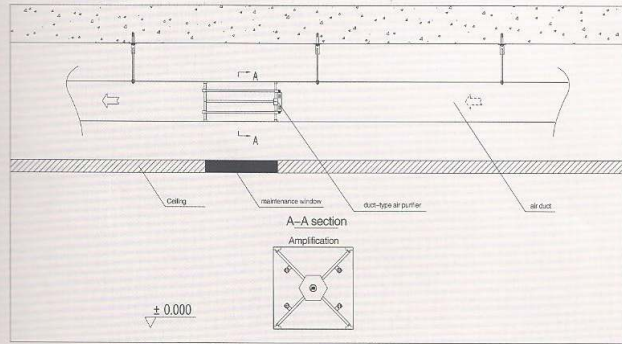




Duct-type Air Purifier Model: ICU 400

installation diagram of UV-4 rocket launcher type air sterilization purifier



Designation of product:
Model:

Physical dimension:

Input voltage:

Working voltage of ionizer:

Working voltage of ionizer:

Working voltage of dust collector:

Temp range of working environment:

Humidity of working environment:

Synchronous control voltage:

Audible noise:

Purification efficiency:

Sterilization efficiency:

Dust removal efficiency:

Product description:

Duct-type air purifier
ICU 400

customized as per client's requirement (the physical dimension shall be determined as per actual installation condition)

AC220V ± 15% (187V~253V) ; 50Hz ± 10%, (45 Hz~55 Hz)

30W-150W (it shall be determined as per specific air volume)

DC8200V, ± 1.5%

DC4100V, ± 1.5%

0~45°C

<90% RH (40°C)

AC25V~AC300V

<25dB

96.2% (test condition) 85.3% (actual measured condition)

99.90%

95%

1、Installation location:

it can be installed at air ducts and air passage

2、Features:

- A、It shall be installed between return air ducts and fresh air ducts
- B、Conducts effective filtering, sterilization, purification on air inside the duct
- C、Various dimensions to suite various air passages are available
- D、Wire control and wireless remote control are available
- E、Offer power-off protective function: power supply will automatically be cut off when the panel is open
- F、Low noise, low wind-age resistance

3、Purification combination:

- Indispensable: initial efficiency filtering, active carbon adsorption, ultraviolet sterilization, photo-catalytic decomposition
- Optional: Electrostatic precipitation, generation of anions

4、Function:

Sterilization, decomposition of organisms, elimination of harmful gas, elimination of unpleasant smells, smoke absorption, dust removal, release of anions

5、Application:

Hospital, hotel, office building, smoking room, bar, KTV, shopping mall, supermarket, exhibition hall, theater, factory



www.somamedical.net